



FY20 ANNUAL REPORT


ENGAGE. DISCOVER. LEARN.






Serving Our Community In Unpredictable Times

Despite the many challenges our community faced this year, **Charles County Public Library** proved to be an organization full of innovative thinkers dedicated to meeting the needs of our community no matter what obstacles we faced.



As you'll see in this report, our mission to create opportunities for our community to engage, discover and learn could not be stopped, even as uncertainty hit. Our staff was empowered to adapt and expand our services despite hardship. We launched a new blog, CCPL @ Home. We pivoted from in-person services and programs to totally virtual offerings in order to help keep our community safe, while still providing access to library resources. We also connected with our community in new ways through live chat on our website, via expanded telephone reference hours, as well as through three new online platforms for virtual programming.

These accomplishments would not have been possible without the dedication of our **extraordinary staff**, the support of our **Board of Trustees**, and the leadership of our **Executive Director, Kenneth Wayne Thompson**, who was appointed to the position mere days before the national lockdown went into effect. We hope you enjoy reading how we were able to make a difference this past year, and look forward to seeing you in the library soon!





CHARLES COUNTY
PUBLIC LIBRARY

Mission & Vision

The Charles County Public Library creates opportunities for the community to engage, discover, and learn.

We are the trusted source for connecting everyone to endless possibilities.



Board of Trustees

Claudia Bellony-Atanga, President

Andrew G. Pizor, Vice President

Janaya P. Thompson, Treasurer

Samantha Lynch Johnson

Kiran "Ron" Sitoula

Danielle Staudt

Vesselina Stoytcheva

Amanda Stewart, M. Ed., Ex Officio Member

The background of the slide features a photograph of a building with a brown roof and brick walls, partially obscured by a semi-transparent white rectangle. Several flagpoles are visible, with the Maryland state flag and the American flag flying. The sky is blue with scattered white clouds. Decorative elements include a solid blue circle in the top-left corner, a solid orange circle in the top-right corner, a solid green semi-circle in the bottom-left corner, and a yellow circle with a black center in the bottom-right corner.

Charles County Commissioners

Reuben B. Collins, II, Esq., Commissioner President

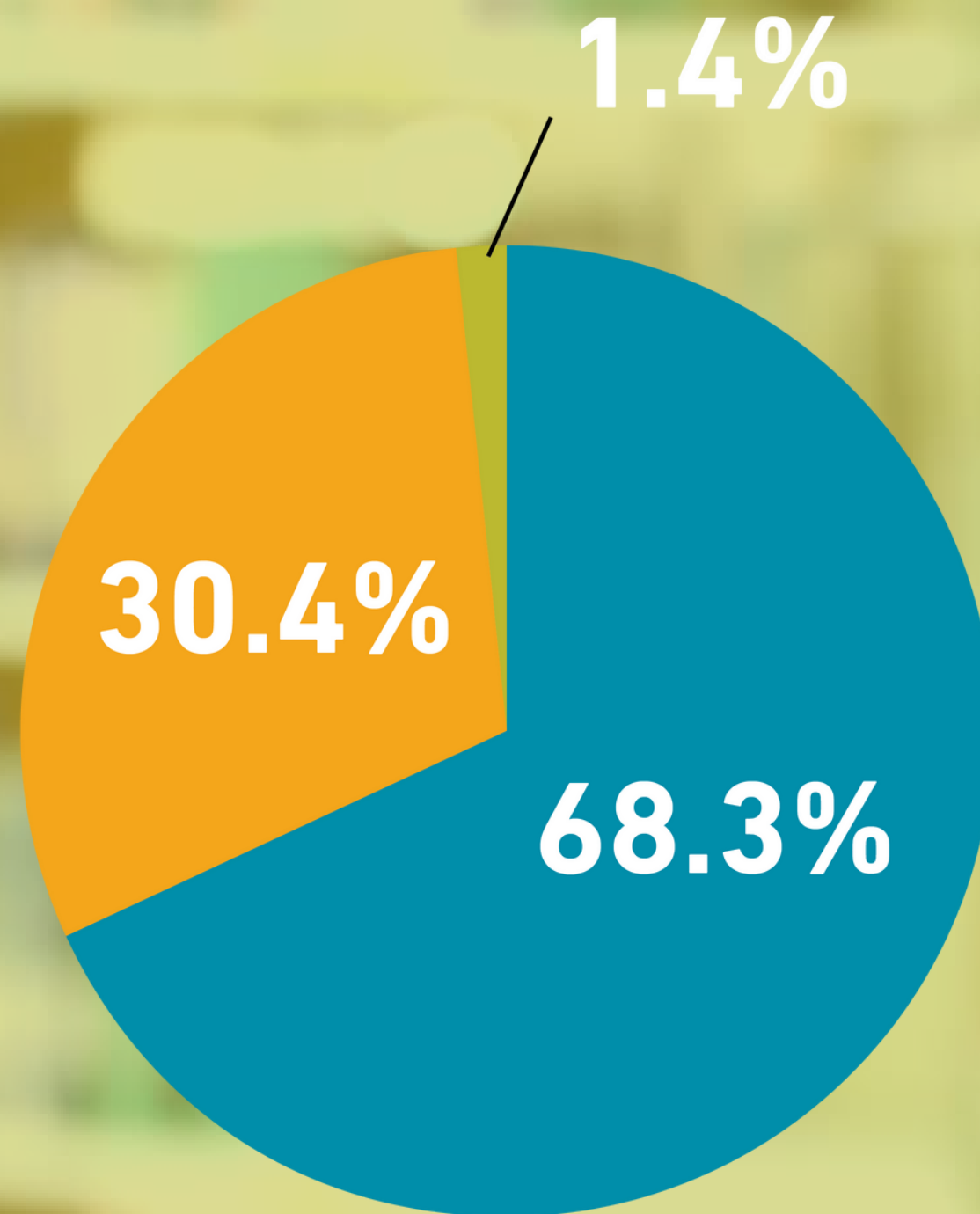
Bobby Rucci, Vice President (District 4)

Gilbert O. Bowling, III (District 1)

Thomasina O. Coates, M.S. (District 2)

Amanda M. Stewart, M. Ed. (District 3)

Operating Budget



County – \$3,863,205

State – \$1,717,467

Federal – \$0

Grants – \$77,340

Total – \$5,658,012



64.5

Full Time



40

Part Time



30

Volunteers

CCPL Employees

Website & Catalog Visits



Library Visits
400,646



Virtual Programs

1275
Programs

23,823
Attendance

**Delivered
Via New
Platforms**

**Zoom
Crowdcast
Google Meet**

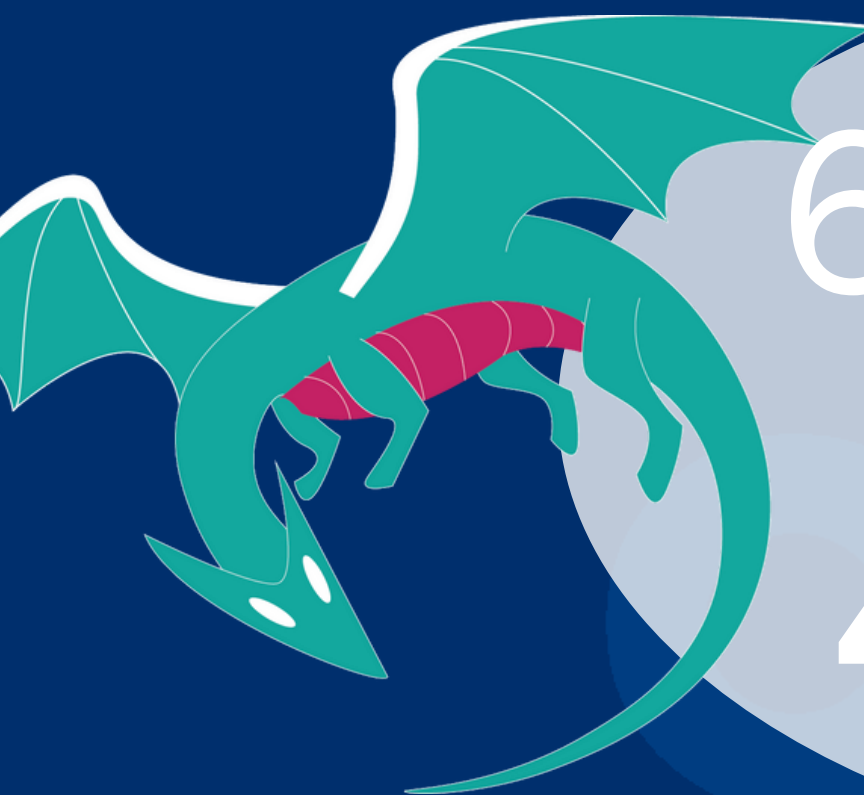
Virtual Reading Challenges

Summer Reading

1,000 participants

673 Program Attendance

46 Special Programs



Circulation



650,324

Materials Circulated

565,961

Physical Items

177,725

E-Content



Digital Services & Resources

84,363
Digital Circulation

93,362
Database Use

Ancestry Library Edition
64,225

BrainFuse
8,171

Freegal Song Streams/Downloads
4,722

Hoopla Circulations
26,307

Kanopy Video Plays
628

Lynda.com
26,307

Overdrive Circulations
64,225

New Virtual Services

Live Webchat



277 sessions

Telephone Reference



628 sessions

CCPL @ Home Blog



238 posts

Mobile Hotspots & Free Parking Lot WiFi

110

Circulating
Wi-Fi Hotspots

1,011

Wi-Fi Hotspot
Circulation



Grew our collection by 100 hotspots
through a grant from the Governor's
Office of Rural Broadband for use in 2021



**FREE WiFi Access was
provided in all facility
parking lots**



Community Partners & Donors

(3) Anonymous Donors | 301 Derby Dames | Alpha Kappa Alpha Sorority, Inc. | Baltimore Orioles | Cherise Banner | Bay K-9 Search & Recovery | Benedict Firehouse | JoAnne Berens | Beyond the Classroom, Inc. | Boston's Restaurant & Sports Bar | Brown Girl Wellness | Budds Creek | Capital Clubhouse | Center for Abused Persons (CAP) | Center for Children | Charles County AARP | Charles County Archaeological Society | Charles County Arts Alliance (CCAA) | Charles County Charitable Trust | Charles County Department of Community Services | Charles County Department of Aging | Charles County Department of Economic Development | Charles County Department of Emergency Management | Charles County Department of Tourism | Charles County Hospice | Charles County Orphans Court | Charles County Parks & Recreation | Charles County Department of Planning & Growth Management | Charles County Public Schools | Charles County Department of Social Services | Charles County Master Gardeners | Charleston Senior Living | Chick-fil-A | Children's Aid Society | Citizens for Charles County Public Library (C4CCPL) | Margaret Cleary | Joseph Cocimano | College of Southern Maryland | Community Foundation of Southern Maryland | Caitlin Crowell | Delta Sigma Theta Sorority, Inc. | DC United | Early Childhood Advisory Council | Margaret Foster-Massey | Forever Free Books | Foundation Information Network | Gray Brothers Market | Greater Waldorf Jaycees | William Gross | Gwynn Center | HeadStart | Health Department of Charles County | Indian Head Senior Center Indian Head Community Center | Indian Head Town Hall | Internal Revenue Service | Island Music Company | James E. Richmond Science Center



Community Partners & Donors

JobSource/DLLR | Journey Beyond | Jude House | Salim & Sheila Khoury | Joel Kore | La Plata Garden Club | La Plata Town Hall | Pamela Leupen | Life Journeys Writers' Guild | Lifestyles of Southern Maryland, Inc. | William Lindsay | Living the American Indian Experience | Paul M. Livingston | Macaroni Kid of Charles County | Magic with K | Maryland AARP | MD Commission for Civil Rights | Maryland Department of Housing & Community Development | Maryland Department of Humanities | Maryland Department of Natural Resources | Maryland Department of Veterans Affairs | Maryland Extension Service | Maryland Family Network | Maryland Insurance Administration | Maryland International Raceway | Maryland Science Center | Maryland State Arts Council | Maryland STEM Festival | Nanjemoy Senior Center | NSWC Indian Head EOD Technology Division | Our Place Waldorf | Donna Peterson | Pets on Wheels | Remembrance Antiques & Treasures | Robert D. Stethem Educational Center | Walter Roscello | Rotary Club of Waldorf | Ashleigh J. Skinner | SkyZone | Sigma Gamma Rho Sorority, Inc. | Silver Diner of Waldorf | Kiran Sitoula | SMECO | Southern Maryland Alzheimer's Association | Southern Maryland Heritage Conservation Area Consortium | Southern Maryland Astronomical Society (SMAS) | Southern Maryland Audubon Society | Southern Maryland Blue Crabs | Southern Maryland Regional Library Association (SMRLA) | Southern Maryland Tri-County Community Action Committee | Spring Dell Center | State Library Resource Center | Danielle Staudt | St. Charles Apartments | The Judy Center | The Playful Parent | KennethWayne Thompson | University of Maryland Charles Regional Medical Center | Waldorf West Mom's Club | Alisa Williams | Linda Wirth

CCPL staff are wonderful. Thank you for always being there for us!

THANK YOU!!!!!! I WISH ALL OTHER LIBRARIES WERE LIKE THIS!

Immediate help, great service as always from CCPL!

I ♥ CCPL!

Am loving the services and programs, especially the seminar on how to be an anti-racist. Hope you do more of these!

Very helpful for my telework!

Awesome customer service!

Thank you for continuing to operate our library through these uncertain times.



CHARLES COUNTY
PUBLIC LIBRARY

ENGAGE. DISCOVER. LEARN.

ccplonline.org

LA PLATA ● MOBILE LIBRARY ● P.D. BROWN ● POTOMAC ● WALDORF WEST