

People

Treleven becomes library's new assistant director

Richard L. Treleven has been promoted from branch chief at the P.D. Brown Branch in Waldorf to assistant director for the Charles County Public Library.

He replaces Janet Corson, who held the assistant director position for five years.

Originally from Ohio, Treleven received his bachelor's and master's degrees in English from Kent State University, where he taught English for four years. Treleven worked as a fiscal supervisor of George Washington University's off-campus division.

Pursuing a life-long love of books and libraries, Treleven obtained his master's in library science from Catholic University. He was county librarian of Washington County Public Library in North Carolina prior to taking the branch chief position at Charles County's largest and busiest Waldorf Branch in 1984.

As branch chief of the P.D.

Brown Memorial Library Branch, Treleven worked constantly to improve the information delivery services available to library patrons. In 1986, the P.D. Brown Branch was third of 66 branch library sites in Maryland surveyed by the Maryland Board of Education Division of Library Development Services (DLDS) in accuracy of information given to patron inquiries.

Treleven has been involved in planning activities for the county library system as a branch chief and is looking forward to his new role as assistant director. "This is an exciting time for the Charles County Public Library system. We are about to begin a new five-year plan for public library services covering 1990 through 1995."

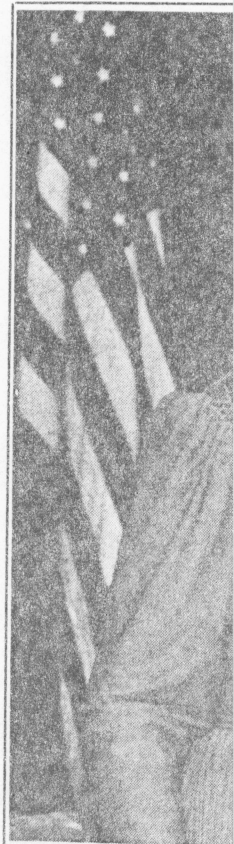
With the help of DLDS, Charles County residents were recently surveyed to ascertain what their informational needs are and what they want from their libraries. Using the results of these state surveys, library staff and trustees

will develop strategies to meet identified needs.

According to Treleven, the Charles County Public Library will model its five-year plan on a similar plan currently in effect in Caroline County, which has been recognized by the U.S. Department of Education for experience in long-range library planning.

"I have a strong commitment to public services," says Treleven, "and we hope to direct our resources and energies toward providing library patrons with access to the information necessary to make informed choices in daily life. We will continue to provide print and non-print materials to address citizens' recreational and cultural interests. I envision the Charles County Public Library as a major contributor to the quality of life of all Charles County residents."

Treleven was also recently appointed co-editor of the Maryland Library Association newspaper. He and his wife live in St. Charles.



Youth awa

Bernice Pickeral (recent installation ba

Countia

Three Charles co appointed to stude Marymount Univers ton, Va.

They are:

- Cameron Falken dorf, was appointed t sign Club vice pres working toward a de merical art.

- Chris Falkenha Waldorf was appoint vice president of the ulty. He is working gree in communicati

- Julie Gardiner of appointed the 1988-89 cial Board Represer Student Faculty Co working toward a d cial education.

Two begin fr year at colleg

Tonia Palmer of W



Photo by Nina Voehl

Donation

The Waldorf Elks returned the rental fee for use of its hall on Route 925 in March to the Charles County Chapter of the Antique American Arts Association for its collectors show.

The proceeds will be donated to the restoration of Habre de Venture in Port Tobacco. Next year's show also will be held at the Elks Lodge on March 4. Shown, from left, are: Emma Weaver, association secretary; Julia Clark, vice president; Cora Fulton, treasurer; Marland Deen, Elks exalted ruler; Earleen Powers, president.